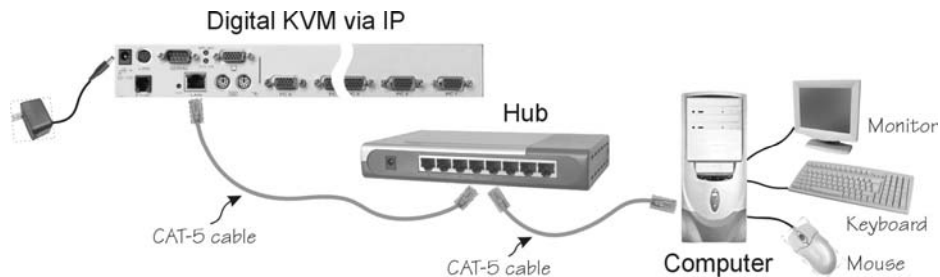


Quick Start Guide

For this Quick Start Guide, we offer three different easy step-by-step ways, letting you setup this unit very quickly.

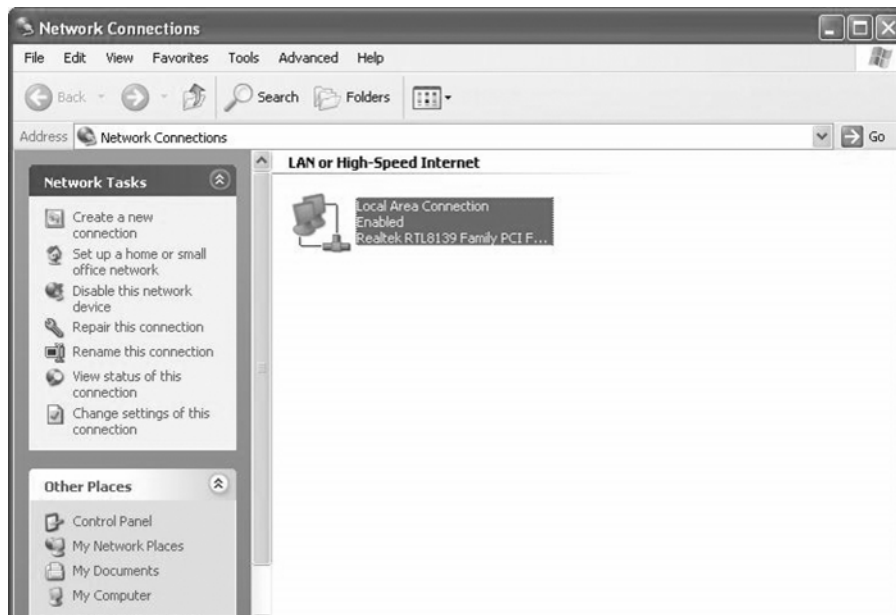
The First Way : If you don't have **DHCP** (Dynamic Host Configuration Protocol)

Step 1. Connect the CAT-5 cable to the **LAN** port on the rear panel of **Digital KVM via IP**. And, connects the opposite end of the CAT-5 cable to the hub.

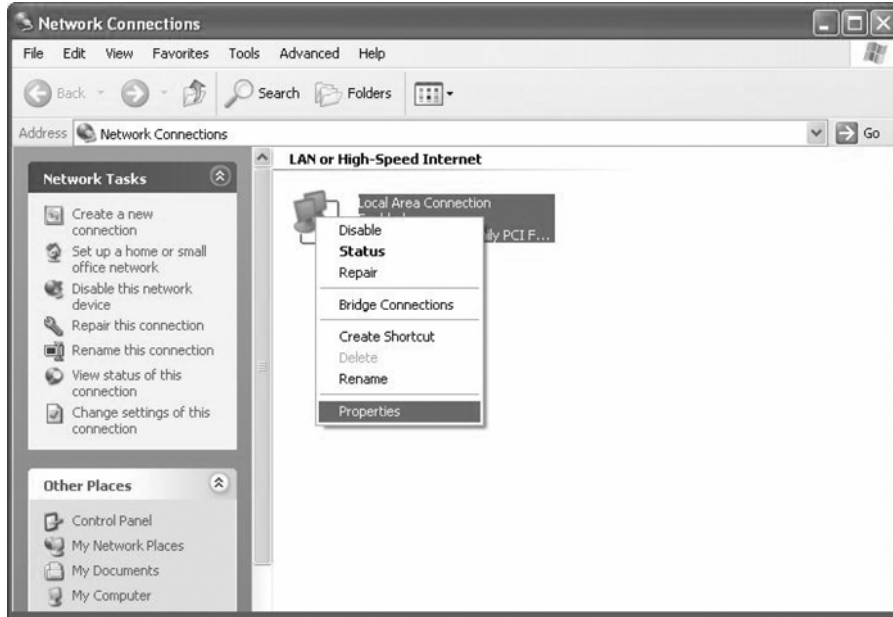


Step 2. Set the IP address of a computer connected on the same network as **Digital KVM via IP** to a similar unused address like 192.168.1.124 and the subnet mask of 255.255.255.0.

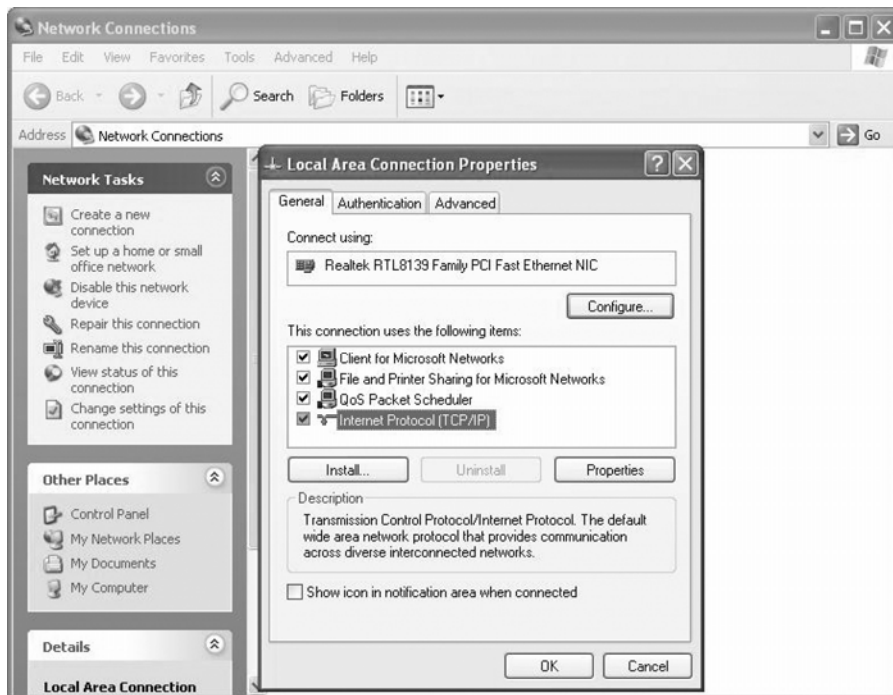
a. Right click on "My Network Places", and select "Properties". You will get the following screen:



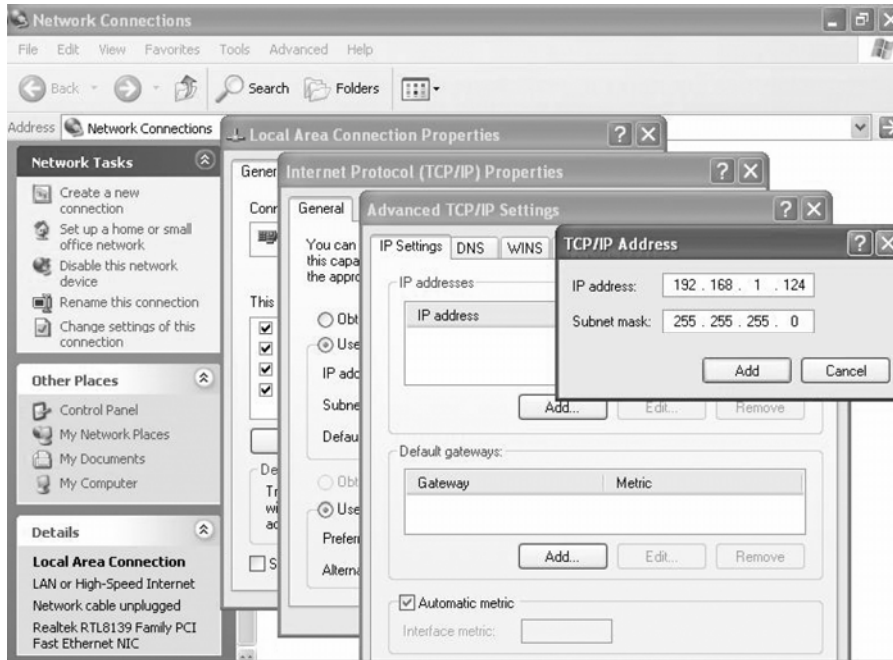
b. Right click on "Local Area Connection", and select "Properties" .



c. Double click on "Internet Protocol (TCP/IP)".



d. Click "Advanced..." , then click "Add..." to add up the IP address of "192.168.1.124", and the Subnet mask of "255.255.255.0".



Step 3. From that computer, open a web browser and go to <https://192.168.1.123>. Login using "admin" for both username and password.

Step 4. Click on the **Admin/Setup** button then **Network configuration (IP address, netmask, gateway)**. From here you can set the IP address as needed.

The Second Way: If you have DHCP (Dynamic Host Configuration Protocol)

Step 1. Please have your MAC address. You can find it on a white sticker on the bottom of the **Digital KVM via IP**. Here is an example, 00-0E-C5-00-08-1A.

Step 2. Power on the **Digital KVM via IP** and connected to the network via **LAN** port on the rear panel. The **DHCP** will automatically assign an IP address for the **Digital KVM via IP**.

Step 3. Access the **DHCP** log from your file server. A simple **DHCP** log looks similar to the following:

```

DHCP Client Log ?
DHCP Client Log View your LAN client's information that are currently linked to the Broadband router's DHCP server.
Numbers of DHCP Clients: 3
ip=192.168.22.3 mac=00-03-93-D1-D7-18 name=stpcpm18
ip=192.168.22.4 mac=00-0E-C5-00-08-1A
ip=192.168.22.5 mac=00-00-39-03-56-D6 name=STPCMOBILE01

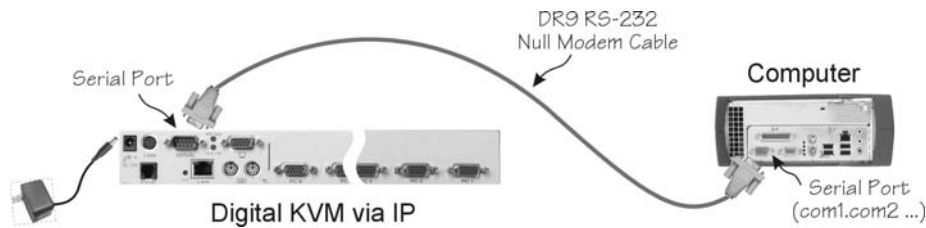
```

Step 4. From the above **DHCP** log, you can easily find the **DHCP** assigned an IP to the **Digital KVM via IP**, 192.168.22.4. Once you have located this IP address, do NOT power off the **Digital KVM via IP** or your **DHCP** server since it might lease a different IP address.

Step 5. Simply open a web browser and type <https://192.168.22.4> to access your **Digital KVM via IP**. Login using “admin” for both username and password.

The Third Way: Using the HyperTerminal via Serial Port

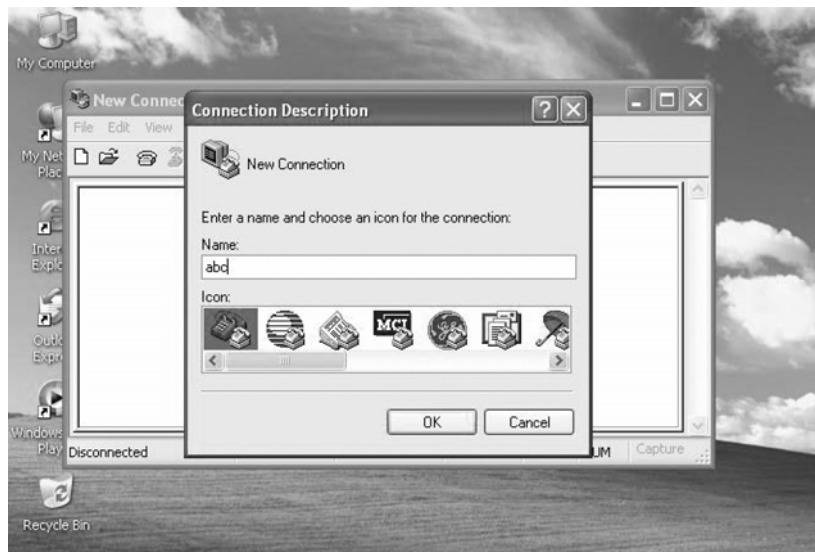
Step 1. Connect the **DB9 RS-232** null modem serial cable (optional) to the serial port on the rear panel of **Digital KVM via IP**. And, connects the opposite end of the cable to the serial port (COM1, COM2...) of your computer.



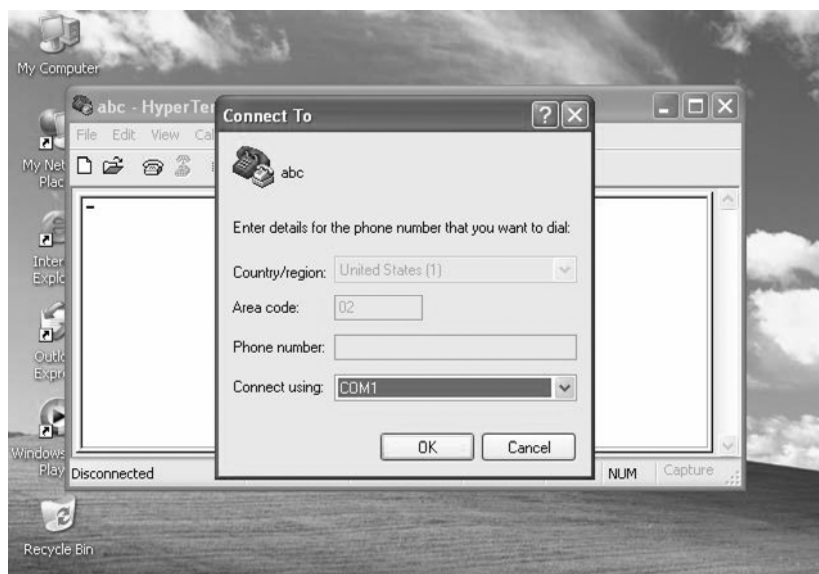
Step 2. From your computer, select “HyperTerminal” as following.



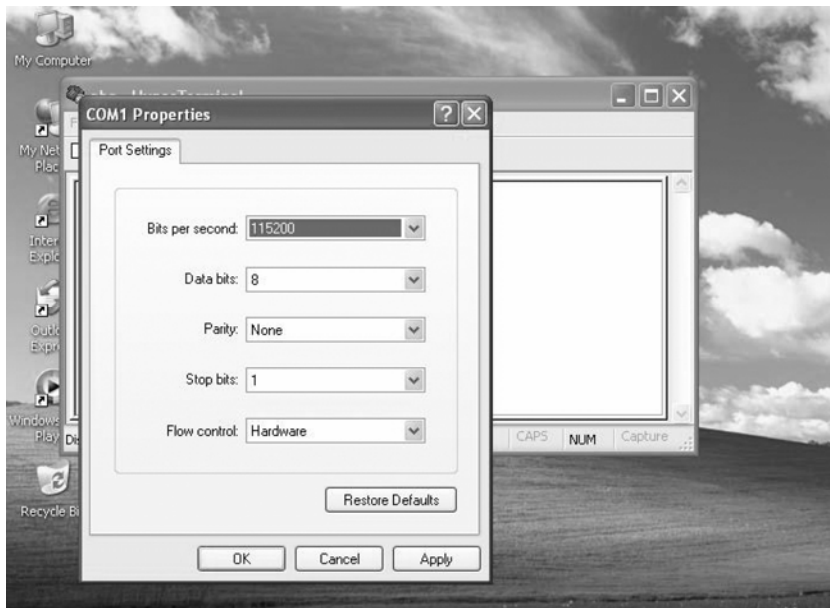
Step 3. If you never setup your HyperTerminal before, it will ask you to input your phone area code, please feel free to do so, and then click "OK", you will get the following screen. Please type any name you prefer, for example, "abc".



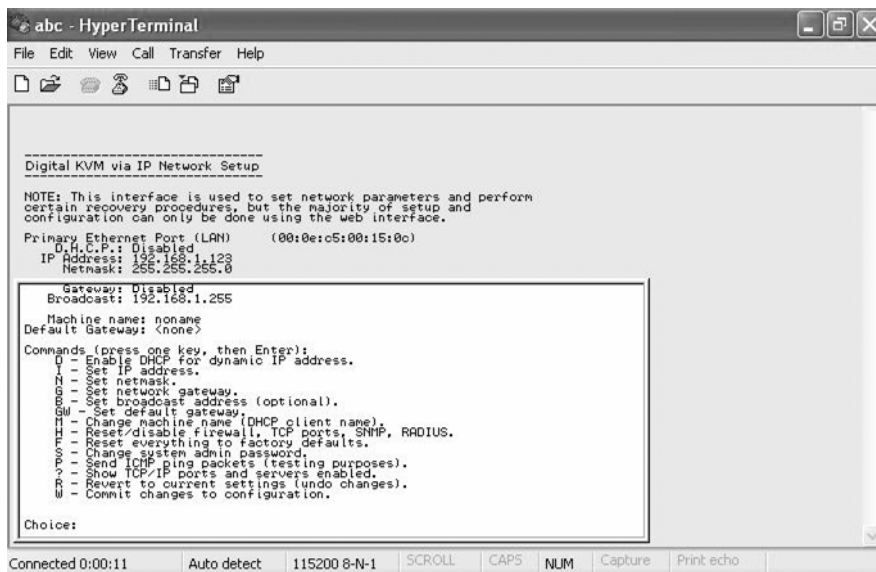
Step 4. Choose the proper serial port you connect.



Step 5. Change “Bits per second” to 115200.



Step 6. Press “Enter”, you will get the following screen.



Step 7. Follow the instruction on the screen. For example, simply type “I” for setting your IP, type “M” for changing the machine name, and so on. **Here is a reminder for you, please type “W” after you made any change.**

